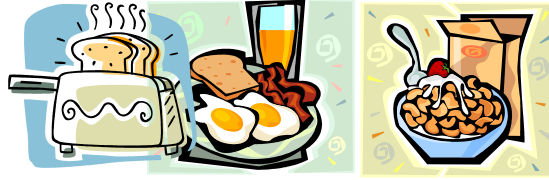


St Mary's Catholic Primary School

'Growing, loving and learning in the arms of Mary'

Meadowside
Sunderland
SR2 7QN
Telephone 0191 5228787
Headteacher Mr M. Clephane



Breakfast Club

The aim of our breakfast club is to provide a relaxed, nutritious and sociable start to the day, to prepare children for learning.

The Breakfast Club is accessible to children from Reception to Year 6. It runs from Monday to Friday, and both children and parents have made positive comments, commending school on provision.

The cost is £3.00 per child, per day. If your child is entitled to pupil premium, there is a charge of £2 per child per day. Payment for Breakfast Club must be paid in advance and can if it helps be paid daily or weekly.

The children are encouraged to choose a healthy breakfast from a selection of cereals, toast, fresh fruit, milk, fruit juice and on occasion bacon, egg, sausage and beans.

The sessions begin at **8.00am**, and the children are able to access a variety of fun activities, including games and ICT.

Please note that children are expected to arrive before 8.30 to access breakfast, as after this the time the kitchen is closed and breakfast is no longer served.

.....

St Mary's Primary School Breakfast Club Booking Form

Child's Name:					
Class:					
	Mon	Tues	Wed	Thurs	Fri
Breakfast Club					

Food Allergies: YES/NO

Give further details: _____

Any special dietary requirements: _____

Signed: _____

Date: _____

Email: info@smrc.school

Website: www.smrc.school

The Governing Body of St Mary's Roman Catholic Primary School and the Diocese are committed to safeguarding and promoting the welfare of children, young people and vulnerable adults and the highest priority is given to following the guidance and regulations to safeguard them and we are committed to respond in accordance with Local Safeguarding Board procedures.